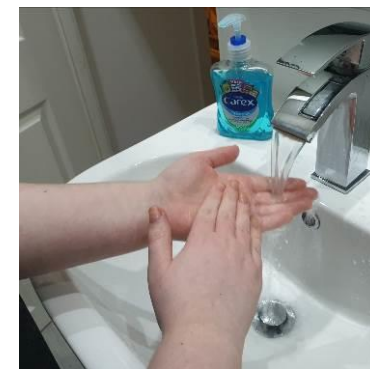
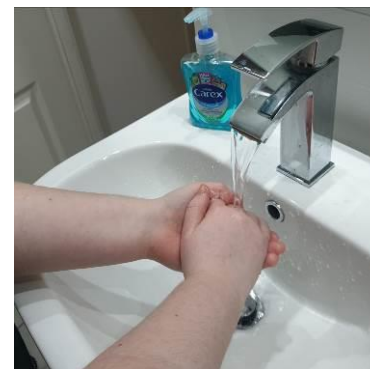


Patient/Informal Carer Information Sheet for Administration of Subcutaneous Intermittent Medication

Remember, if you have any concerns about any of the steps you can contact your community nurse using the numbers in your care plan.

1. Wash your hands with soap and water and dry well.

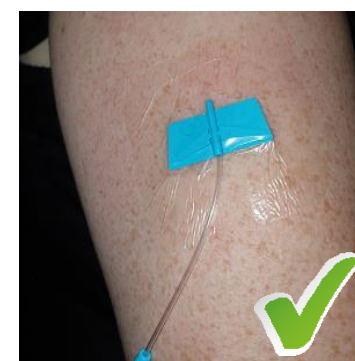


2. Assemble the equipment in a clean container. You will need:
- Medication(s) ampoule(s) as well as water for injection/normal saline for flushing.
 - 1 or 2 ml Luer-lock syringes.
 - Drawing up safety needle(s).
 - Alcohol wipe.

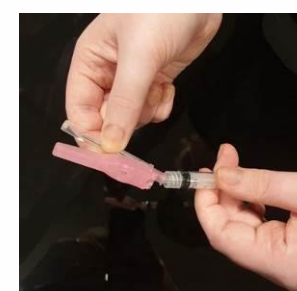


3. Check the injection site for:

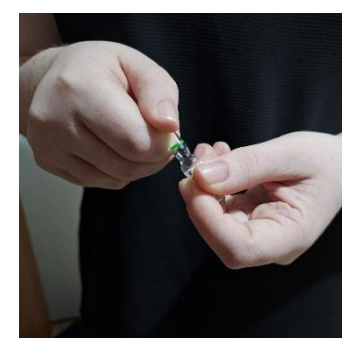
- Redness.
- Tenderness.
- Swelling.
- Leakage.



4. Attach the drawing up safety needle to the Luer-lock syringe.
- Take the syringe out of the packet.
 - Put the safety needle onto the syringe using a twisting action until secure.



5. Open the plastic or glass ampoule. Dispose of the broken off cap in the sharps box.



6. Drawing up medication from an ampoule:

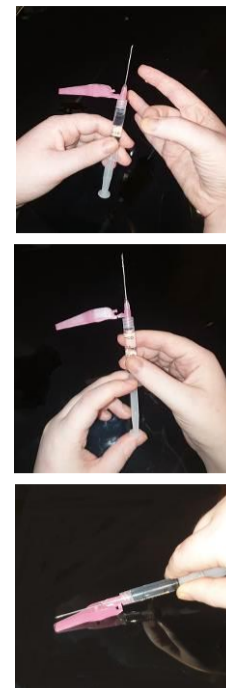
- Place the ampoule in a position that is comfortable for you, such as between thumb and forefinger or turn the ampoule upside down. The medication should not come out of the ampoule when turned upside down.
- Insert the safety needle into the ampoule.
- Draw up the medication by slowly pulling back on the plunger of the syringe.



Patient/Informal Carer Information Sheet for Administration of Subcutaneous Intermittent Medication

6 Drawing up medication from an ampoule: (continued)

- Once the medication is removed from the ampoule, hold the syringe with the needle pointing upright.
- Flick the syringe with your finger to get all air bubbles to the top, then push the plunger up to expel the air bubbles from the syringe.
- Slowly push the plunger of the syringe upwards until you have the correct dose/amount as instructed by the doctor/nurse.
- Close the safety needle cover by pushing it on a hard surface until it clicks.
- Dispose of the ampoule directly into the sharps container.



7. Give the injection into the cannula:

- Take the prepared syringe(s) in a clean container, and a sharps container to the person.
- Remove the safety needle and dispose of it into the sharps container.
- Swab the needle-free device at the end of the cannula with an alcohol wipe.
- Insert the syringe into the needle-free device and turn clockwise until secure. Slowly push the plunger of the syringe until the barrel is empty.
- Remove syringe from the cannula by turning anti-clockwise and dispose of it into the sharps container.
- Repeat the process with 0.2mls of water for injection/normal saline after all medications have been given to flush the line (your nurse will tell you which to use).



8. Check the injection site for:

- Redness.
- Tenderness.
- Swelling.
- Leakage.



9. Record the medication(s) given in the palliative care kardex and check after 30 minutes that they have worked.

10. Safe storage and disposal of medication(s):

- Store medication(s) in a container in a cool place away from children and away from the view of the general public.
- Store sharps container out of reach as directed by your nurse.
- It is important to dispose safely of unused medication(s). Return unused medication(s) to your local pharmacist when they are no longer required.
- Your nurse will dispose of the sharps box and any unused needles and equipment.