



SIMPSON CENTRE

FOR

REPRODUCTIVE HEALTH

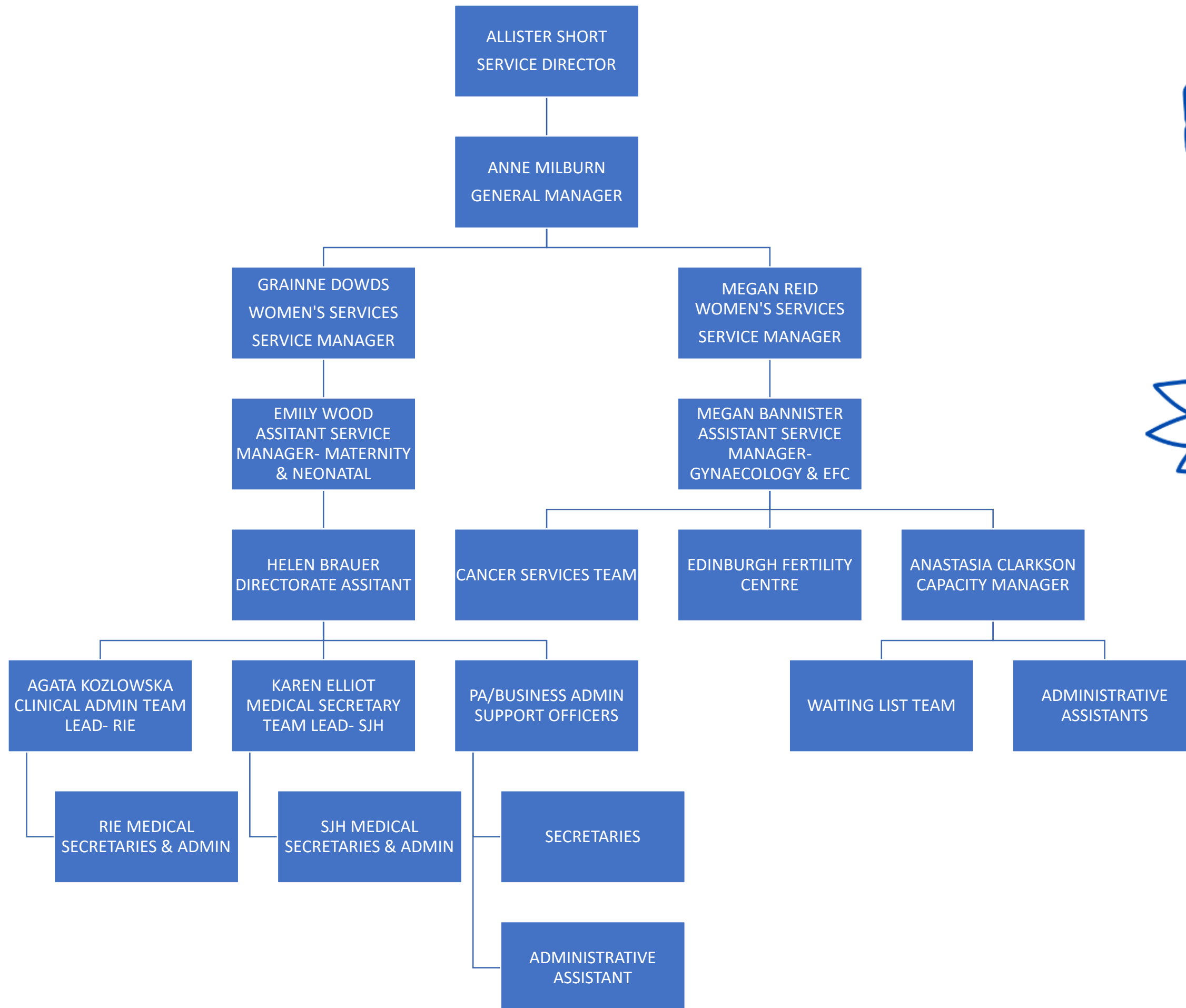


NHS

Lothian

WOMEN'S SERVICES – SERVICE MANAGEMENT

NHS





WOMEN'S SERVICES – OBSTETRICS & FETAL MEDICINE






CORRINE LOVE
CONSULTANT-OBSTETRICS
ASSOCIATE MEDICAL DIRECTOR



EMMA DOUBAL
CONSULTANT OBSTETRICIAN & GYNAECOLOGIST
OBSTETRICS CLINICAL DIRECTOR



OBSTETRIC CONSULTANTS



FETAL MEDICINE CONSULTANTS







SARAH COOPER
CONSULTANT-OBSTETRICS



SHONA COWAN
CONSULTANT-OBSTETRICS



ANNE ARMSTRONG
CONSULTANT-OBSTETRICS
INTRAPARTUM LEAD



NIRMALA MARY
CONSULTANT-OBSTETRICS & GYNAECOLOGY
FETAL WELLBEING LEAD



BRIDGET SMYTH
CONSULTANT-OBSTETRICS



ALASTAIR CAMPBELL
CONSULTANT-OBSTETRICS & GYNAECOLOGY
ASSOCIATE POST GRADUATE DIRECTOR



OONAGH KEAG
CONSULTANT-OBSTETRICS



SARAH STOCK
CONSULTANT-OBSTETRICS




FLORENCE FANKAM
CONSULTANT-OBSTETRICS & GYNAECOLOGY
OBSTETRIC ROTA LEAD



HANAN MUSTAFA
CONSULTANT-OBSTETRICS



CAROLYN CHISWICK
CONSULTANT-OBSTETRICS



KAREN EDGAR
CONSULTANT-OBSTETRICS & GYNAECOLOGY
COLLEGE TUTOR



LYDIA SIMPSON
CONSULTANT-OBSTETRICS



NIVEDITA AEDLA
CONSULTANT-OBSTETRICS



JAQUI LAURIE
CONSULTANT-OBSTETRICS & GYNAECOLOGY
QI LEAD



LOUISA HERMIS
CONSULTANT-OBSTETRICS & GYNAECOLOGY




CLAIRE ALEXANDER
CONSULTANT-OBSTETRICS
ASSOCIATE POST GRADUATE DIRECTOR



KIRSTY DUNDAS
CONSULTANT-OBSTETRICS
EDUCATION & TRAINING SUPPORT



ANDREW BROWN
CONSULTANT-OBSTETRICS



ROSIE TOWNSEND
CONSULTANT-OBSTETRICS



WOMEN'S SERVICES – GYNAECOLOGY





CORRINE LOVE
CONSULTANT-OBSTETRICS
ASSOCIATE MEDICAL DIRECTOR



STUART JACK
CONSULTANT-GYNAECOLOGIST
GYNAECOLOGY CLINICAL DIRECTOR



GENERAL
GYNAECOLOGY



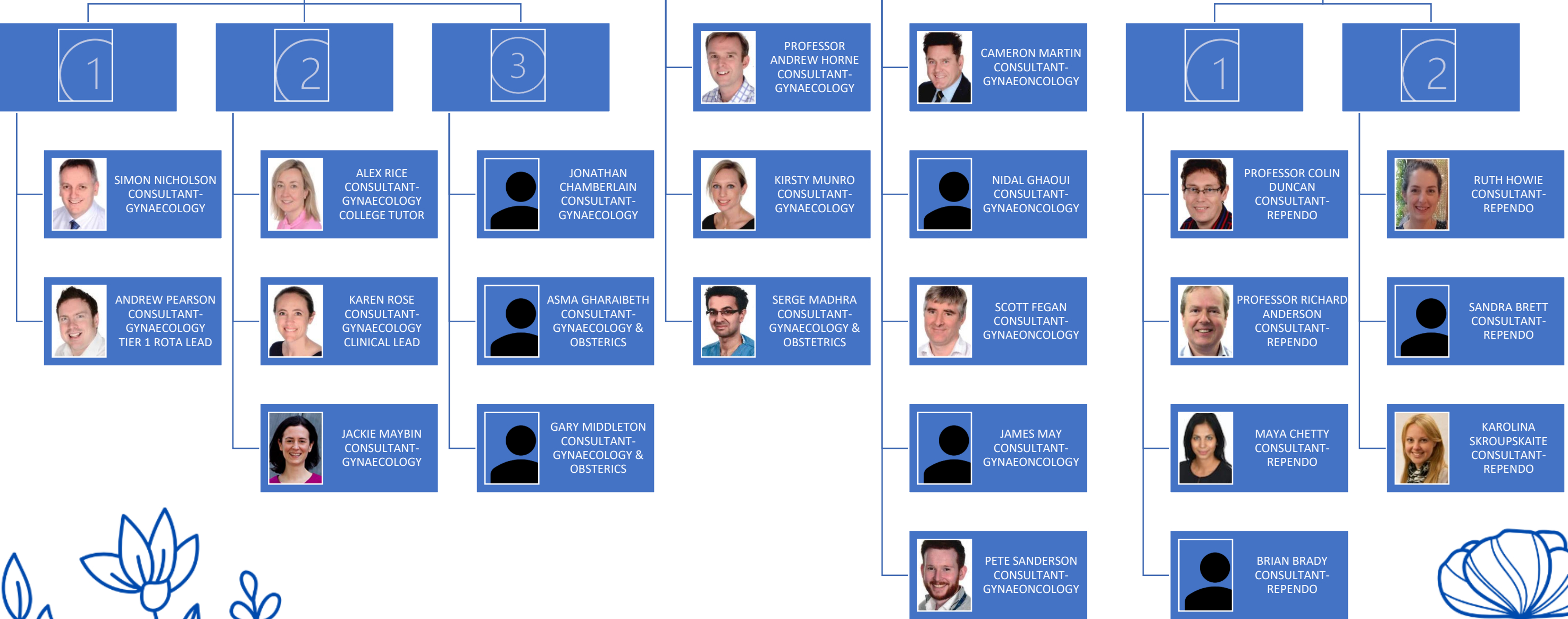
ENDOMETRIOSIS



ONCOLOGY



REPRODUCTIVE
ENDOCRINE/ EFREC



WOMEN'S SERVICES – NEONATAL & MIDWIFERY

