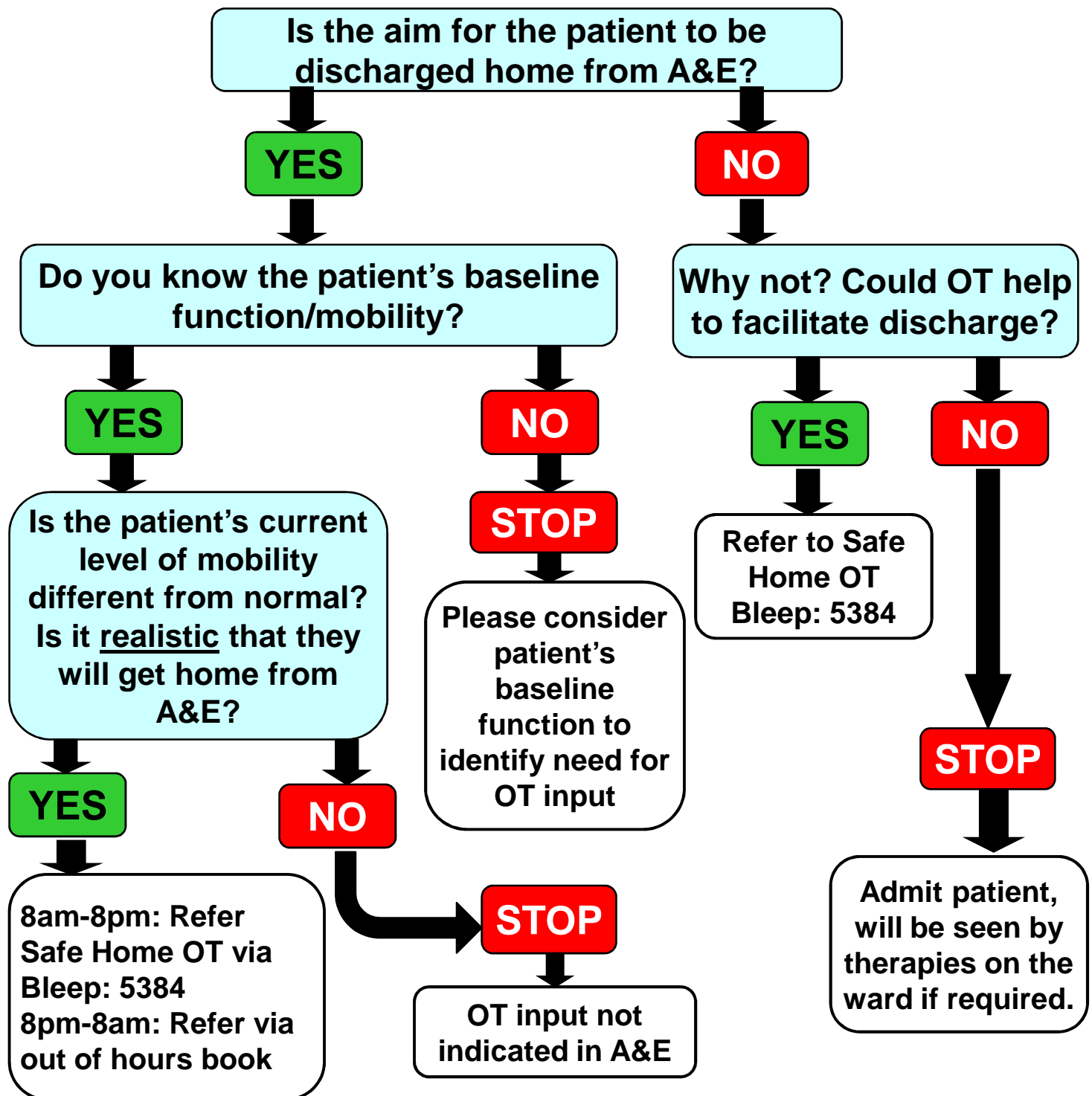


A&E OT 'Safe Home' Referral Chart



Examples of appropriate referrals to OT:

- Patients thought not to be at baseline level of function and need assessment to determine if suitable for discharge home e.g. acute fracture
- Patients who have highlighted concerns regarding ability to cope at home
- Acute history of worsening balance and / or falls

Considerations for referral to OT:

- Over 65
- Functional impairment/decline
- Chronic confusion
- Immobility or falls in last 3 months
- Carer stress

