

RIE AMU FRAILTY TEAM

Tel: 07812740115

or

Bleep: 2249/4112

1) Age >75

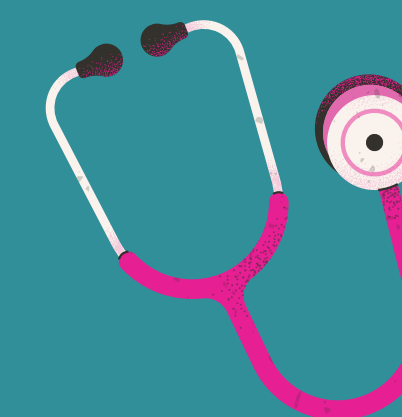
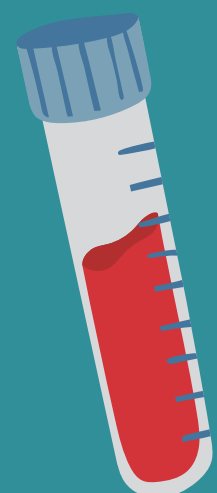
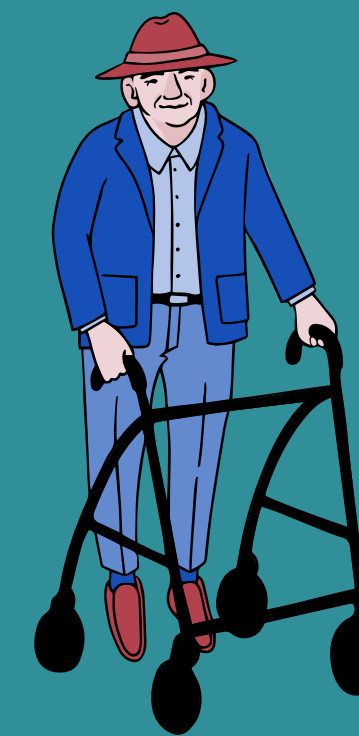
PLUS

2) Clinical Frailty Scale (CFS) 6-8

PLUS

3) Patient has not been admitted with a single organ problem

(if so patient should be referred to the appropriate specialty in this case)



If specific advice is required for older patients with a frailty syndrome then please do discuss with the team, however in general, patients will not be taken over unless the above criteria are met.